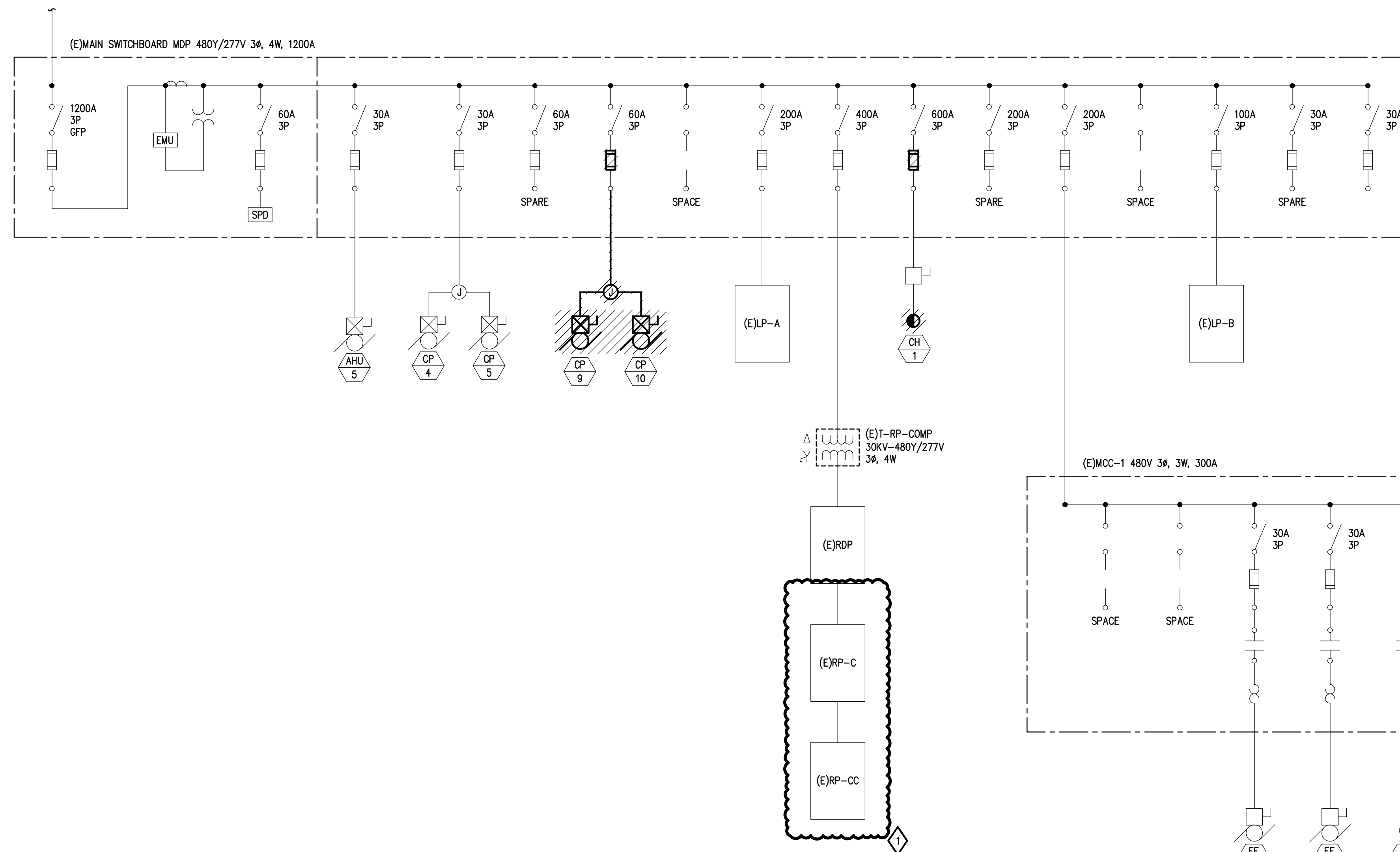
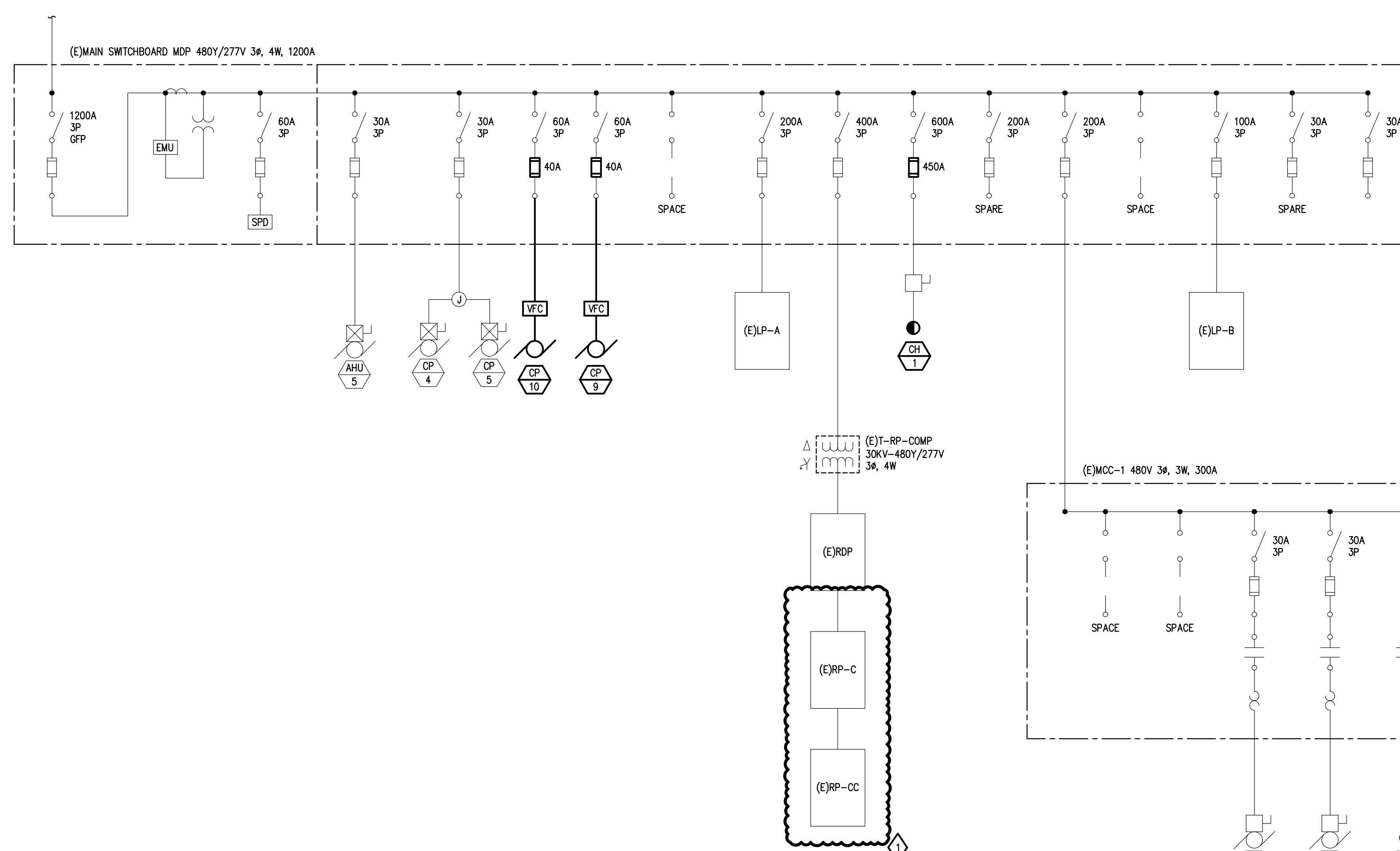
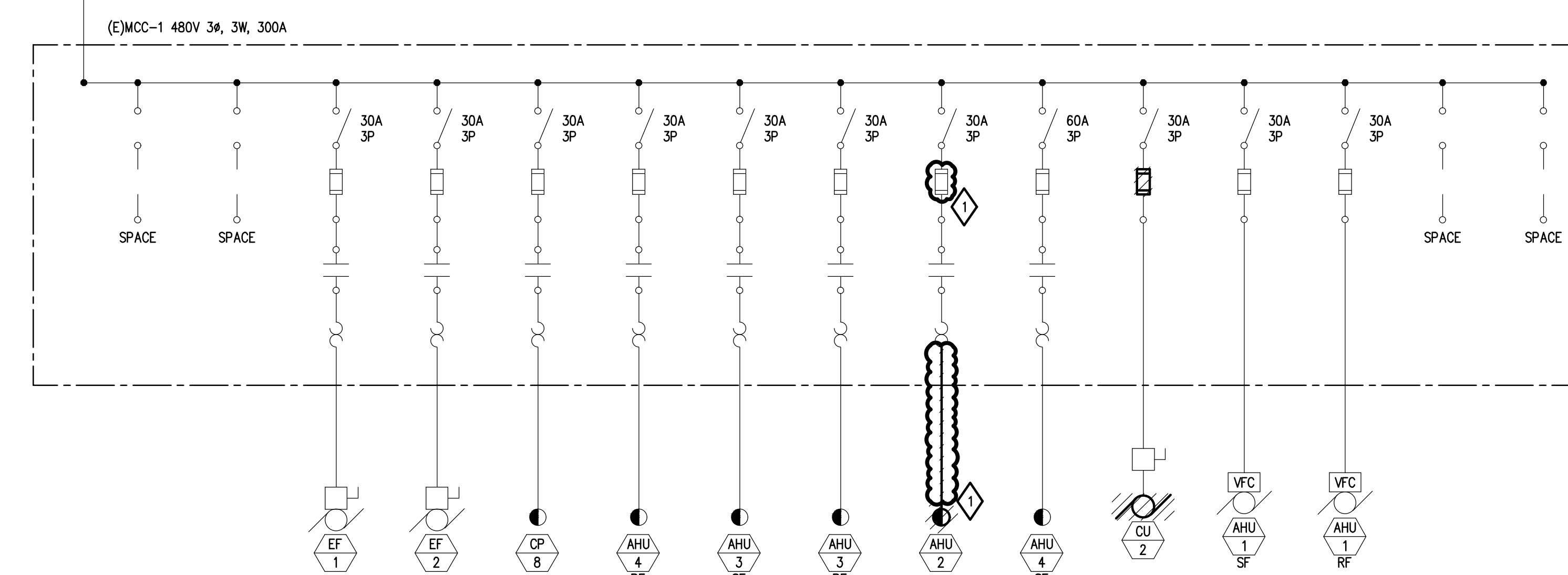


DIAGRAM GENERAL NOTES:

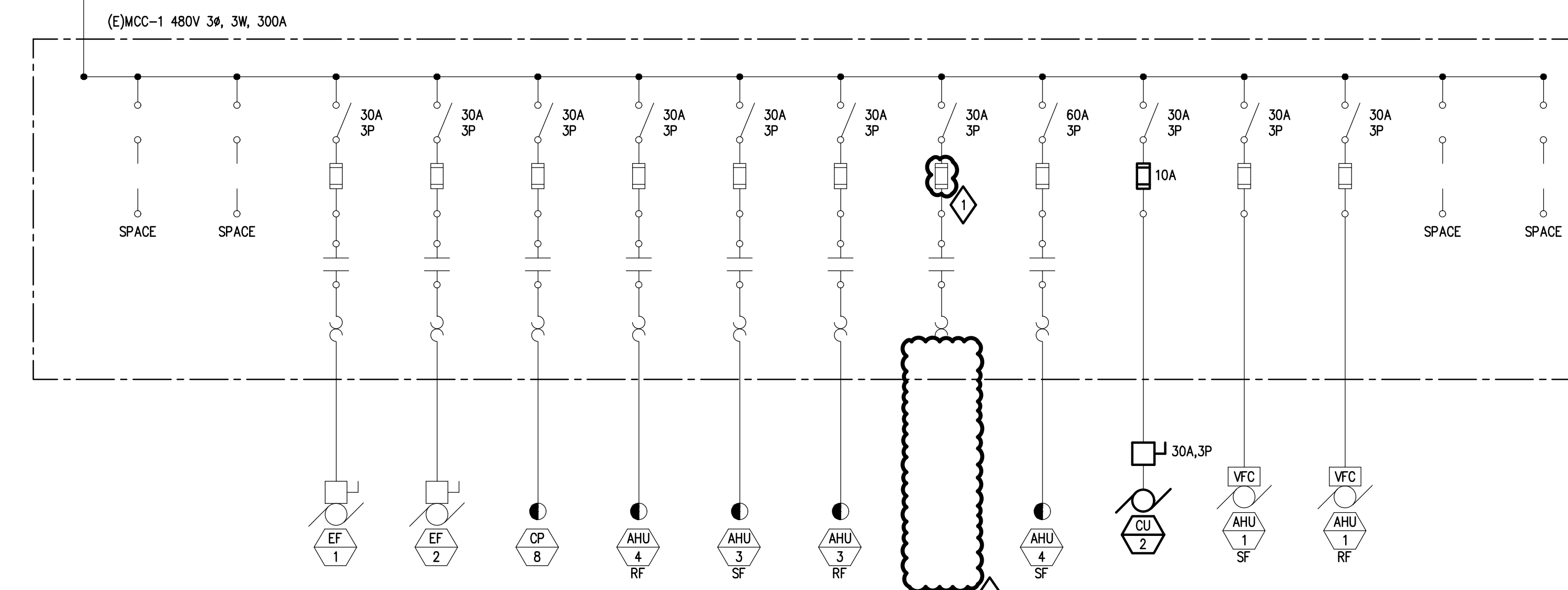
1. THESE DRAWINGS REPRESENT THE GENERAL EXTENT AND ARRANGEMENT OF SYSTEMS. COORDINATE EXACT EQUIPMENT LOCATIONS, ELEVATIONS, AND FINAL CONNECTION REQUIREMENTS. PROVIDE EACH SYSTEM COMPLETE, INCLUDING ALL NECESSARY COMPONENTS, FITTINGS AND OFFSETS.
2. FEEDER AND BRANCH CIRCUIT SIZING SHALL BE SIZED IN ACCORDANCE WITH THE "FEEDER AND BRANCH CIRCUIT SIZING SCHEDULE-GENERAL PURPOSE" ON THE "ELECTRICAL STANDARD SCHEDULES DRAWING" UNLESS SPECIFICALLY NOTED OTHERWISE.
3. MOTOR CIRCUIT PROTECTION SHALL BE SIZED IN ACCORDANCE WITH THE MOTOR CIRCUIT SIZING SCHEDULES ON THE "ELECTRICAL STANDARD SCHEDULES DRAWING" UNLESS SPECIFICALLY NOTED OTHERWISE.



ONE LINE DIAGRAM - DEMOLITION
NO SCALE



ONE LINE DIAGRAM - NEW WORK
NO SCALE



**MAIN SWITCHBOARD
CONNECTED LOAD CALCULATION**

MAIN SWITCHBOARD METERED LOAD	406 (1.25)	507 KVA
ADDED LOAD		
MDP (CH-1)	7 KVA	
RP-CC (AHU-2)	1 KVA	
TOTAL CONNECTED LOAD		515 KVA

REVISION
ADDENDUM NO.1
05-22-2026

5145 Livernois, Suite 100
Troy, Michigan 48066-9276
www.PeterBassoAssociates.com
PBA Project No.: 22081004.03
Peter Basso Associates
CONSULTING ENGINEERS

PROJECT TITLE
**ANCHOR BAY SCHOOL DISTRICT
MACONCE ELEMENTARY SCHOOL
HVAC Upgrade**
5201 County Line Road, Casco, MI 48064

Not for Construction
SHEET TITLE
ONE LINE DIAGRAM
DATE
05-1-2026
ISSUE
CONSTRUCTION DOCUMENTS
SHEET No.
E5.1

g:\2026\2026-0034-00\CAD\53 macconce es hvac upgrade\2026-0034-53-E5-DC.dwg, ES.1, 5/22/2026 9:46:36 AM, Nathan D.B. Hand, Peter Basso Associates Inc.